

**Applied Math
Flooring Project**

Name _____

Date _____

Question: How much will it cost to buy new flooring for this room?

Assignment:

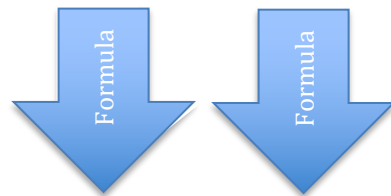
The Tahanto Beautification Committee has once again tasked this class with making Tahanto just a little bit nicer. The first step is to make this room a bit more cozy by replacing the floor.

You will calculate the area of the floor of this class room (219). Then you will research a variety of flooring options (for example, www.homedepot.com) and create a spreadsheet that calculates the total cost of each option. You will need to provide links/screenshots of each product. You will also make a scale drawing of the classroom using paper or a Google Drawing diagram. The basic dimensions of the room are 30 ft by 39 ft.

You will need to make two tables. One will tell the dimensions of the room and how you calculated it, using only a single ruler. The second table will calculate the cost of each option.

Here are some sample tables that we will create together on Sheet 1 (rename to Data). The first table is a sample of Proficient level. Advanced level would require two more columns for the door alcove and the back (slightly small width)

Dimensions	
Length	
Width	
Total Area	=FORMULA



Flooring	Sold by the case/roll/square	Cost per Unit	Units Covers	Units Needed	Total
Inexpensive Carpet 1	case	\$83.89	40	AUTO-CALC	\$\$\$\$
Expensive Carpet 2					
Inexpensive Wood 1					
Expensive Wood 2					

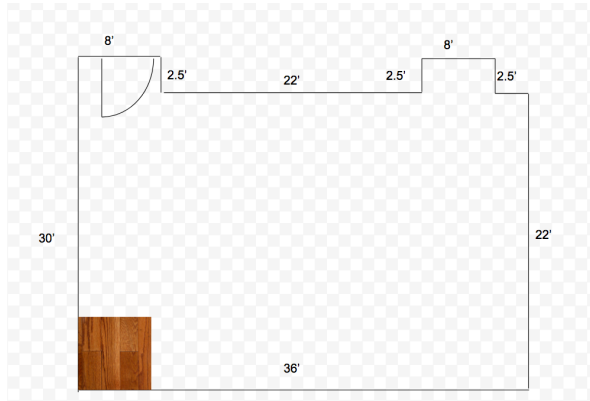


Applied Math Flooring Project

Reflection questions: See attached Google Doc and answer them accordingly.

Drawing

1. Label dimensions
2. Label door and white board
3. Optional: insert some flooring as preview. You may insert more than one.



What to Submit:

1. Spreadsheet: 2 tables/sheets
2. Doc: reflection
3. Drawing: scale drawing of classroom

Rubric

A: Exceptional	Proficient Plus: Excellent use of shading. Pictures of carpet/wood inserted into the spreadsheet. More flooring options. Accurately subdivided room (include the door alcove and desk alcove). Drawing is precise and includes the alcoves.
B: Proficient	Data is accurate. Organization is clean. Spreadsheet auto calculates. Links work well. Two carpets, two hardwood flooring. Good estimation of room dimensions. Drawing is a good approximation.
C: Basic	Some missing data. Not full auto calculation.
D: Developing	Significant portions are missing from spreadsheet.
F: Inadequate	Incomplete by missing most information.